



## **SOS phone reflector light and sign**

**Model: DP1**

Emergency phone light:

- Frame: Aluminum alloy frame
- Shell: Mica (plexiglass)
- Energy-saving LED;
- Power supply: 220VAC
- IP protection:  $\geq$ IP 65

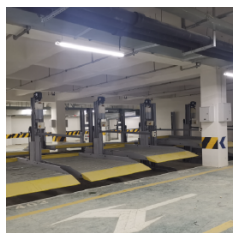
Phone logo:

- Easily visible to drivers even when it's dark
- The sign is installed or detached to the phone booth and is automatically illuminated by a light sensitive sensor.

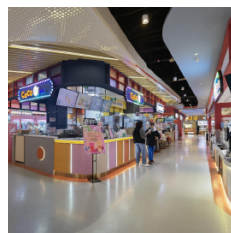
### **Application Scenarios**



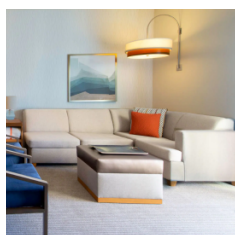
**Tunnel**



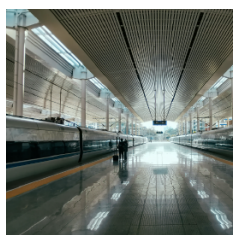
**Garage**



**Mall**



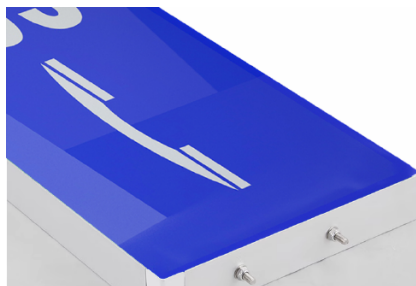
**Hotel**



**Station**



**Hospital**

**Acrylic panel**

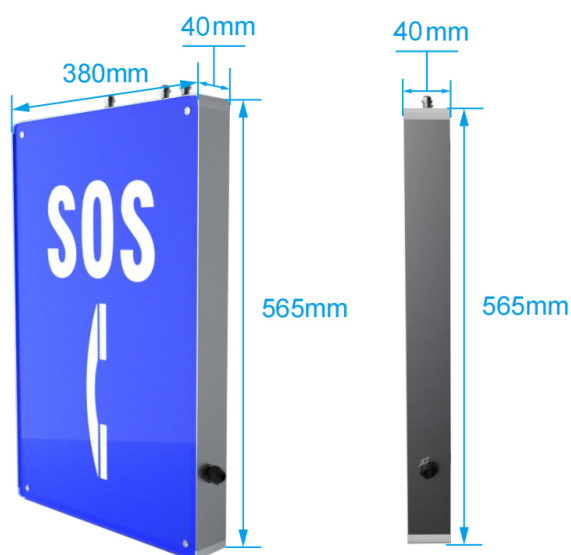
Using high transparency acrylic material, with high transparency and uniform luminescence

**Easy to install**

Simple wiring, flexible L-shaped bracket, adjustable and easy to install

**Frame flame retardant material**

The frame is made of flame-retardant plastic material, which has good compressive strength and is not easy to rust



- Dimensions: 380mm (width) x 565mm (height) x 40mm (depth)

Web: [www.koontech.com](http://www.koontech.com)

Email: [marketing@koontech.com](mailto:marketing@koontech.com)

Tel: (HK Office) +852 9068 2799 / (Shenzhen Office) +86 755 2744 8753

Shenzhen Office: T3 1001, Yifang Center, Baoan, Shenzhen, China

HK Office: Unit C, 2/F, Ka To Factory Building, 2 Cheung Yue Street, Cheung Sha Wan, Kowloon, Hong Kong

Factory: KNTech Building, Phoenix Mountain, Limhai Zone, Shajiao Community, Humen, Dongguan, China