



KNTD-50M

UC features for up to 50 users

The KNTD-50M IP PBX appliance is designed to bring leading edge voice, video, data, and ability features to enterprises, small and medium businesses, retail and residential environments in an easy-to-manage fashion. This enterprise-grade on premise IP PBX supports SIP Trunk, RJ45 networks and offers scalability by supporting up to 50 users. This rich feature set at an unprecedentedly low price delivers a secure and reliable IP PBX solution without any licensing fees, costs-per-feature, or recurring fees. Host Standby N+1 redundancy System design.

KNTD-50M server is a computer device that centrally processes and manages information, with multiple functions such as storing, processing, sharing, and protecting data.

The KNTD-50M server can be equipped with three major systems: telephone, broadcasting, and access control, and has efficient and stable performance to meet your various needs.



50 users
Supports up to 50 users,
10 SIP trunk accounts,
up to 50 concurrent calls.



Three-In-One
Optional,
Telephone system,
Broadcasting system,
Access control system.



Strongest-possible
security protection using
HTTP



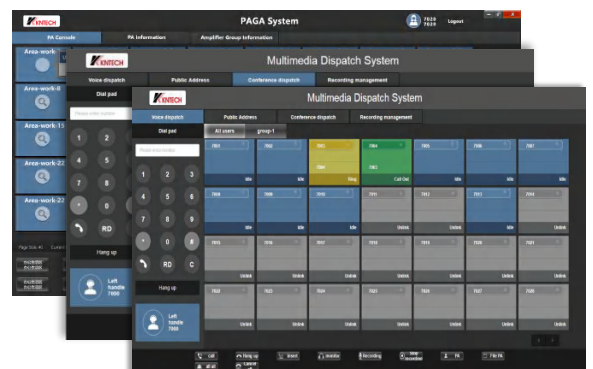
Supports IVR
(Interactive Voice Response)



Built-in call recording server
recordings accessed
via web user interface

SIP

Supports call queue
for efficient call
volume management



Technical Parameter

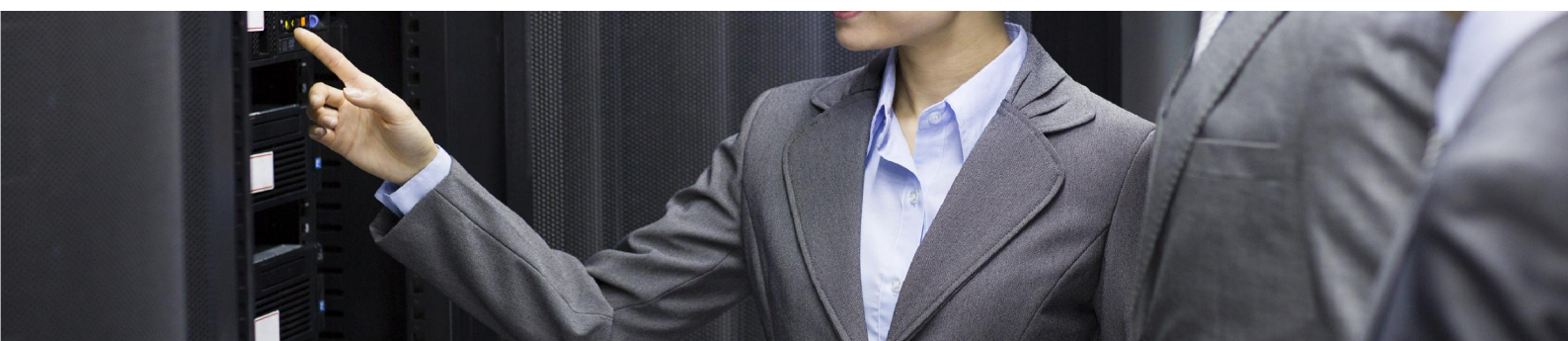
Model	KNTD-50M IPPBX Enterprise - class unified communication system
Hardware interface	
	Host Standby N+1 redundancy System design
Network Interface	RJ45 Gigabit interface (10/100 / 1000M Ethernet adaptive)
Reset switch	Support, Web configuration
Network Interface	RJ45 Gigabit interface (10/100 / 1000M Ethernet adaptive)
Audio / video capability	
Speech algorithm	G.711, 7.29, 7.23,7.26 encoding
Voice	G.711 A-law/ U-law, G.723.1, G.726, G.729A
Video coding	H.264.
Signaling protocol	
DTMF detection method	Support RFC2833, SIP INFO
Digital signal	SIP2.0
Terminal management and automatic deployment capabilities	Support for SIP terminal plug -and-play auto-deployment (including DHCP / multicast SIP , support Remote upgrade,local upgrade)
Network protocol	TCP UDP IP, RTP DHCP,SSH,HTTP,SIP
Safety	
Advanced defense	Alert events, whitelists, blacklists
Physical characteristics	
Global universal power supply	Input: 100~ ~ 240VAC, 50 / 60Hz;
weight	Equipment weight: 3.5 Kg; Package weight: 4,4Kg
Use the environment	Operating environment:32 -113° F/0~ 45° C, humidity 10 - 90% (No condensation) Storage environment: 14-140°F / - 10 ~ 60° C, humidity 10 - 90% (No condensation)
Installation	Desktop or cabinet installation

Additional features

Multi language support	Web user interface supports English / Simplified Chinese, customizable IVR / voice prompts in English, Chinese
Caller ID	ETSI-DTMF
Call Center	Supports call queues.
Customize Auto	Supports IVR (Interactive Voice Response)
Concurrent call	Up to 50 SIP terminals can be registered, up to 10 concurrent calls
Meeting room	Supports up to 10 voice conference rooms, up to 100 voice conference members
members	Calls waiting, Call transfer, Ringing group, Subgroup, meeting, broadcast, blacklist, call / intercom, etc

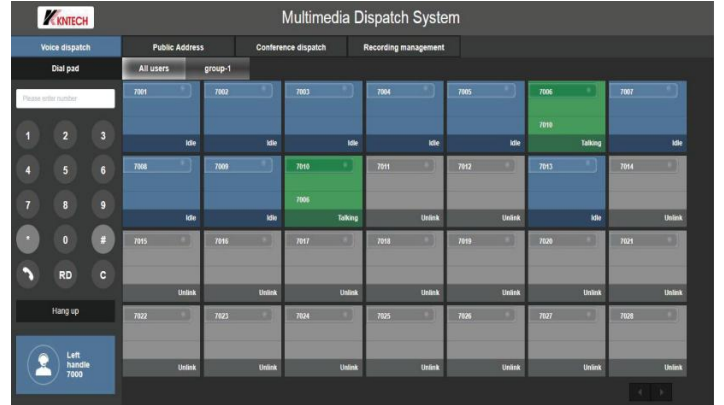
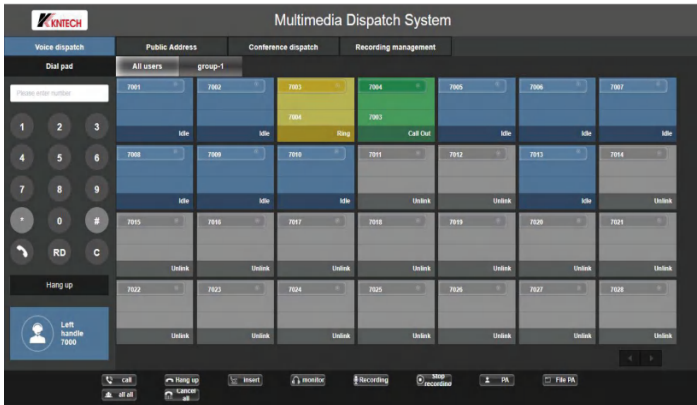
KNTECHIP PABX MODEL NUMBER

REGISTER USER	SIMULTANEOUS CALLS	MODEL NUMBER
50 line	10 line	KNTD-50M
100 line	20 line	KNTD-100
300 line	60 line	KNTD-300
500 line	100 line	KNTD-500
800 line	160 line	KNTD-800
1000 line	200 line	KNTD-01K
3000 line	600 line	KNTD-03K
5000 line	1000 line	KNTD-05K

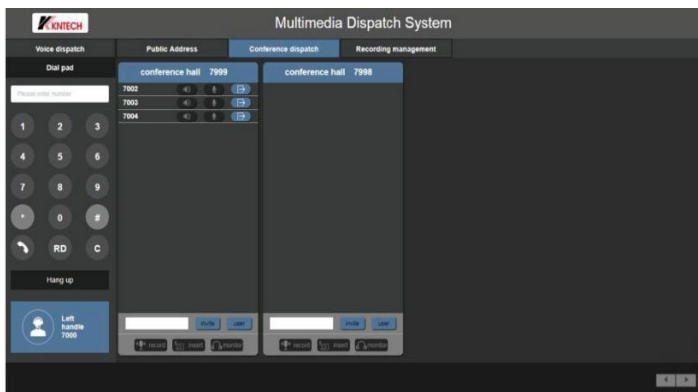


Voice dispatch-Telephone call

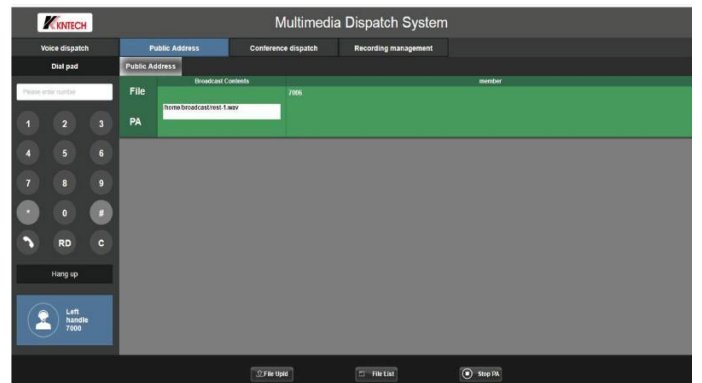
Blue color means on line , green color means ringing, yellow color means busy.



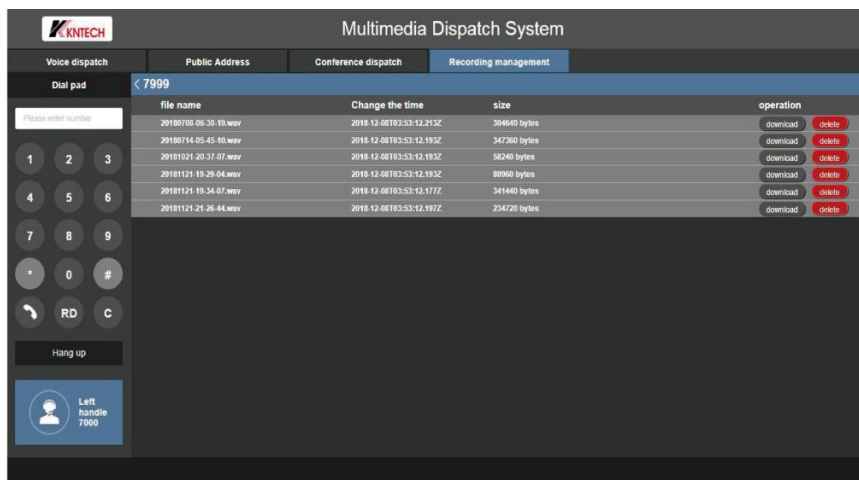
Conference dispatch-Meeting room



Public Address



Configuration Manual



Emergency telephone system

