

昆 仑 科 技

www.koontech.com

香港昆仑科技（深圳）有限公司

Regular Customer

THALES SIEMENS



Alcatel-Lucent



HUAWEI

ERICSSON
TAKING YOU FORWARD

AVAYA
The Power of We



SOS telephone GSMKNEM-23B

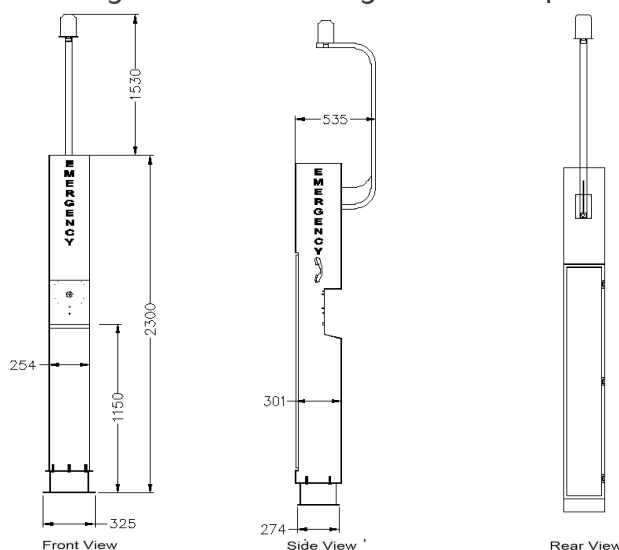


1 2 3

The most professional manufacture in Asia
The exclusive supplier for all Metro project in China

The Weatherproof phone will be designed to work on Railway, metro, tunnel, etc. Housed in robust aluminium die case with spring loaded door, it will offer protection against the outdoor environment, vandals resistance and rot resistance.

The unit will meet all the latest European/UK standards for EMC and US FCC, telephony, waterproofing IP67, and lightning protection together with offering the level of performance and reliability demanded in such an environment.



Main Product features

1. GSM/ VOIP/PSTN optional.
2. Matell body, solid and temperature bearable.
3. Handset free, loudspeaker.
4. Heavy duty Vandal resistant buttons.
5. With or without keypad optional.
6. Lightning protection standard to ITU-T K21.
7. Waterproof grade about IP55.
8. Body with grounding connection protection.
9. Support hotline call, self stop if the other side hang up.
10. Built-in loud speaker, noise canceling microphone.
11. Lighting will flash when there is a incoming call.
12. AC 110v/220v powered or built-in rechargeable battery with solar powered panel optional.
13. The design is super thin and smart. Embed style and hanging style can be chosen.
14. Time out function optional.
15. Colours: RED + Stainless steel , If the qty over 100pcs can be To customer specification.

- Standard and SMART Analogue and VoIP-SIP options available
- DTMF(Dual Tone Multi Frequency)
- Matching with most PABX,PBX and PAX systems.

Main PCB

1. Well treated PCB used inside the phone.
2. Robust screw terminals used for the connection of ringer, handset, line in, hookswitch.
3. Selectable 7 minute time out, to release the line if the handset is left off hook.
4. All connectors be greased in production.

VOIC OVER IP- SIP (Version)

Connection type: RJ45 Socket inside sealed enclosure

Power supply: External 24V dc

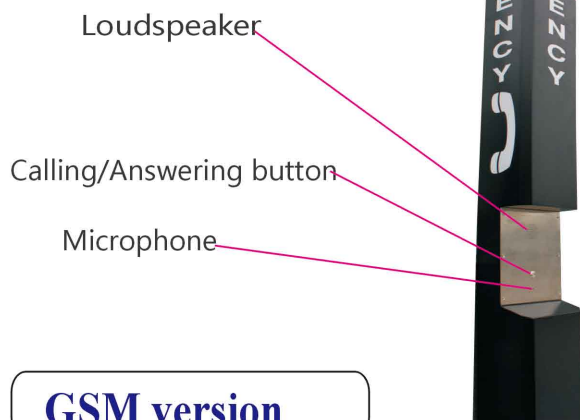
Call set-up Protocol: Session Initiation Protocol(SIP)

Configuration: DHCP or STATIC IP address provisioning



The most professional manufacture in Asia
The exclusive supplier for all Metro project in China

Telephone layout



GSM version

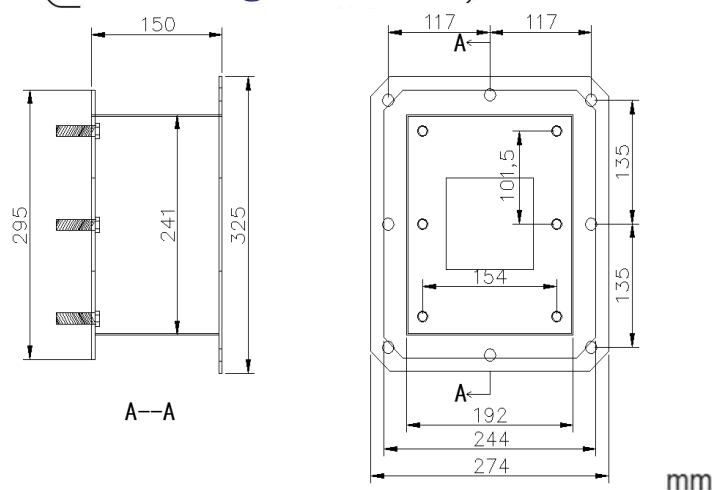
GSM 2G/3G Solar Powered with built-in rechargeable battery

1. Network Interface: GSM Frequency: 850/900/1800 /1900MHZ, 2G, 3G,WCDMA,
2. Ringing: Through internal Speaker/ringer
3. Power Supply: Re-chargeable Battery powered: 9V/14Ah,
4. Solar back-up: 12V/30W
5. Time out: selectable 0-20 minutes
6. Built-in battery standby: 21 days, can improve to 42 days.
7. Built-in battery talking time: 56hours, can improve to 100 hours

TECHNICAL SPECIFICATION

1. **Network Interface:** GSM Frequency : 850/900/1800/1900MHZ
2. **Ringing:** Through internal Speaker/ringer
3. **Power Supply:** Re-chargeable Battery powered: 9V/14Ah, Solar back-up: 12V/30W
4. **Time out:** selectable 0-20 minutes
5. **Temperature:** -20°C~ +60°Cemp
6. **Relative Humidity:** up to 90%
7. **Built-in battery Standby:** 21days
8. **Built-in battery talking time:** 21 hours

Mounting bracket



Connection cable

Stainless steel connection cable to exchange.
 Well treated keep waterproof.

Packing detail:



unit weight;with light pole:80KG size:3830*325*535mm
 unit weight without light pole:75KG size:2300*325*301
 1pcs in each wooden box, size: 2350*450*330
 20GP:75PCS 40GP:150PCS 40HQ:180PCS

Certification:



EMC: EN50121 (Railway application-
 ElectromagneticCompatibility)
 EN55022: emissions
 En55024: immunity

FCC
 ITU-T Recommendations K21