

昆 仑 科 技

[www.koontech.com](http://www.koontech.com)

香港昆仑科技（深圳）有限公司

Regular Customer

THALES SIEMENS



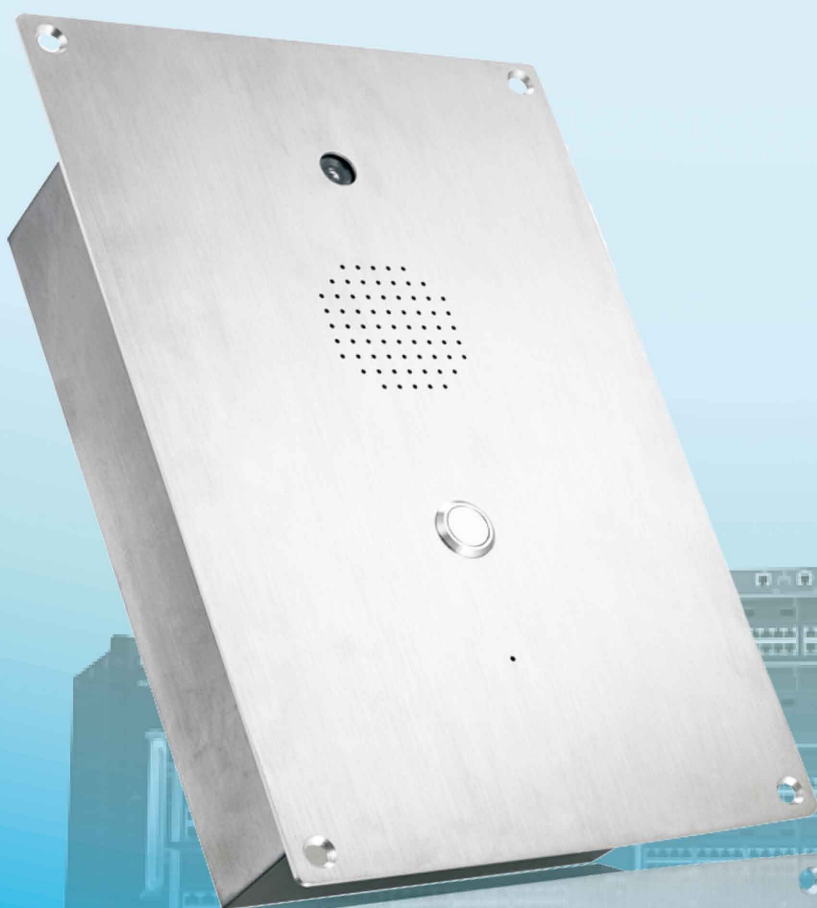
Alcatel-Lucent



HUAWEI

ERICSSON  
TAKING YOU FORWARD

AVAYA  
The Power of We



Induction Loop Installed  
To use, please switch your  
hearing aid to 'T'

Optional Induction loop

facility for hearing impaired

12V DC required

Hongkong Koon Technology Ltd

[www.koontech.com](http://www.koontech.com)

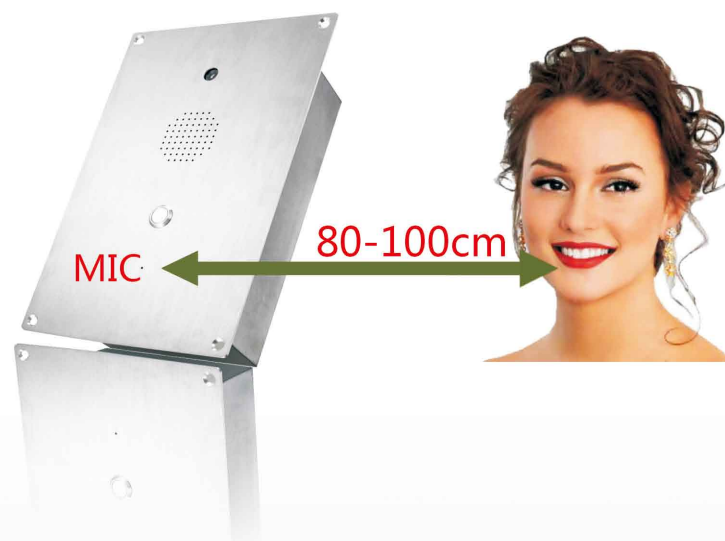
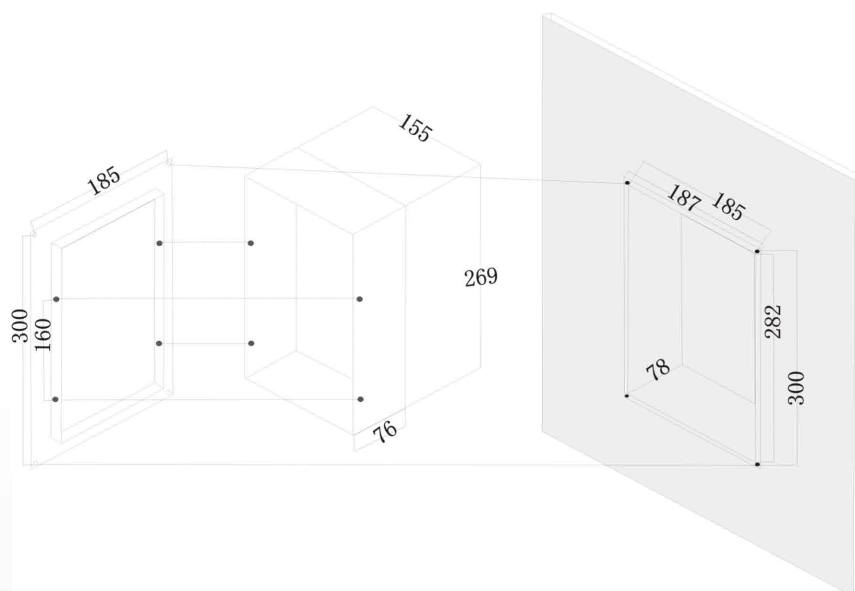
**Emergency telephone SUSKNZD-20**





## The most professional manufacture in Asia The exclusive supplier for all Metro project in China

The emergency call telephone will be designed to work on railway, metro, tunnel, etc. Housed in stainless steel box with one CALL/ ANSWER button, it will offer protection against the outdoor environment and vandals. The unit will meet all the latest European/UK standards telephony, waterproofing IP65, and lightening protection together with offering the level of performance and reliability demanded in such an environment.



### Main Product features

1. High waterproof, dustproof performance, SUS304 full stainless steel body, protection grade reaches to IP65.
2. High durability, oil, acid, alkali resistance, conform to the standards of GJB - 773 and UL1332 requirements.
3. Without handset, communication via loudspeaker.
4. Import SHARP, CMOS camera.
5. Highly integrated mainboard, using the most advanced industry-specific microcontroller made in ATMEL company.
6. The box with earthing device is completely isolated with internal electric circuit, and has certain electromagnetic shielding effect.
7. Conversation with clear loud voice, no feedback screaming.
8. Support hotline of exchange system.
9. Support the function of exterior line automatic lift.
10. Support conversation time limited.
11. Camera starts up automatically after lifting and turns off when hanging up.
12. Strong, thick and beautiful body with embed wall design.
13. talking distance: 80cm-100cm.

- Standard and SMART Analogue and VoIP-SIP options available
- DTMF(Dual Tone Multi Frequency)
- Matching with most PABX,PBX and PAX systems.

### Main PCB

1. Well treated PCB used inside the phone.
2. Robust screw terminals used for the connection of ringer, handset, line in, hookswitch.
3. Selectable 7 minute time out, to release the line if the handset is left off hook.
4. All connectors be greased in production.

### VOIC OVER IP- SIP ( Version )

Connection type: RJ45 Socket inside sealed enclosure

Power supply: External 5V dc

Call set-up Protocol: Session Initiation Protocol(SIP)

Configuration: DHCP or STATIC IP address provisioning

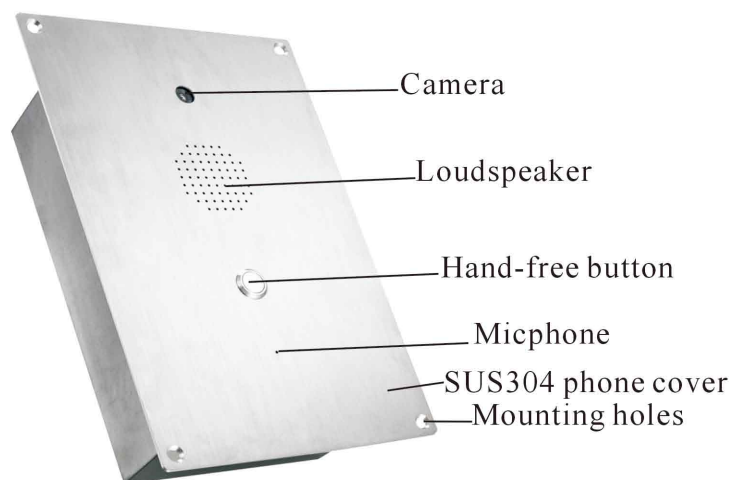




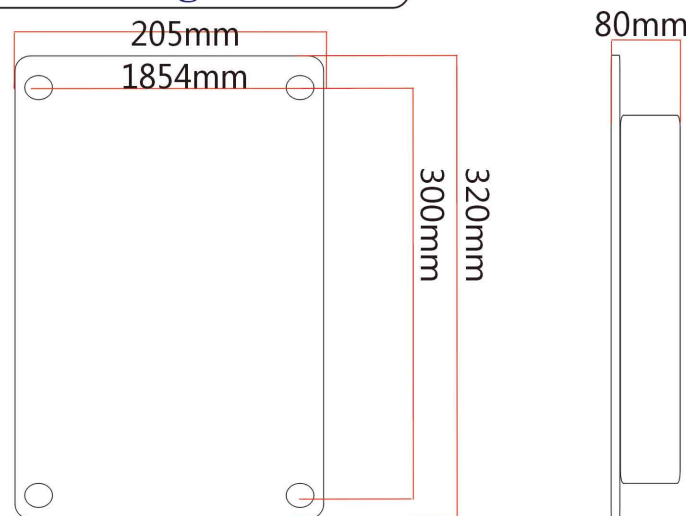
1 2 3

**The most professional manufacture in Asia**  
**The exclusive supplier for all Metro project in China**

## Telephone layout



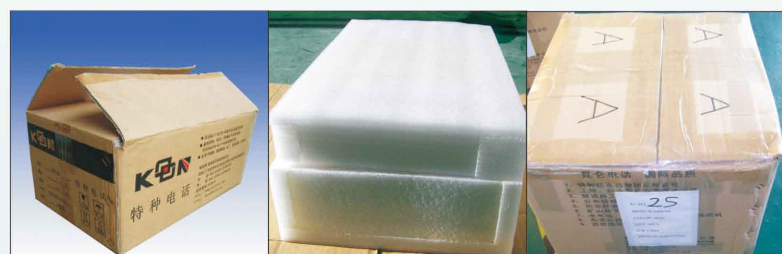
## Mounting bracket



## Connection cable

Stainless steel connection cable to exchange.  
Well treated keep waterproof.

## Packing detail:



Unit size: 250\*150\*\*50mm , N.W: 1.2KG

1pcs in each inner CTN box, size: 325 \*235 \*75mm G.W: 1.4KG

10pcs in outer CTN box, size: 566 \* 445 \*420mm G.W: 15.3KG

## Certification:



EMC: EN50121 (Railway application-  
Electromagnetic Compatibility)  
EN55022: emissions  
En55024: immunity

FCC  
ITU-T Recommendations K21

## TECHNICAL SPECIFICATION

1. It is suitable for automatic instruction amplification telephone system when feed voltage reaches to 33- 60V.
2. Environmental temperature: -30'C ~ 60'C
3. Relative humidity: 10% ~ 95%
4. Atmospheric pressure: 86 ~ 106Kpa
5. Environmental noise:  $\leq 80\text{dB}$
6. Double audio dialing
7. Standard frequency: 697, 770, 852, 941Hz
8. Low frequency group: 697, 770, 852 , 941Hz
9. High frequency group: 1209, 1336 , 1477Hz
10. Frequency offset:  $\leq \pm 1.5\%$
11. The signal level when the length of user's line is 3km:
12. Standard frequency: Low frequency group: -9dB
13. High frequency group: -7dB $\pm$ 3dB
14. Level difference between high and low frequency of combined signal: 2 $\pm$ 1dB
15. The total intermodulation distortion caused by harmonic is 20dB lower than wave level.
16. Call transmission index: (5Km) SLR  $\leq 12$ , RLR  $\leq -1$ , and STMR  $\geq 10$ , Input impedance: 600 $\Omega$
17. DC 12V powered
18. Handsfree operation built-in loud speaker 0.5W.



**The most professional manufacture in Asia**  
**The exclusive supplier for all Metro project in China**

### Camera Technical Specification

Model	GD - B261C
Pickup device	1/3 OV7949 CMOS
SYS	PAL/NTSC
Effective Pixels	268(H) x586(V)x / 510(H) x 496(V)
Sensing Area	5.961mm x 4.276mm
Scanning System	2:1 Interlaced Scanning
Sync System	Internal Synchronization
Sharpness	420TV lines
Horizontal Sync Frequency	15.625KHz / 15.734KHz
Vertical Sync Frequency	50Hz /60Hz
Minimum Illumination	0Lux/F2.0 with IR
Video Output	1.0vp-p, 75Ω
Gamma Coefficient	0.45
AGC	Auto
Sound / Noise Ratio>	48dB
White Balance	Auto
Electronic Shutter	1/50-1/80000(s) / 1/60-1/80000(s)
Backlight Compensation	Auto
Current	80mA ± 10%
Voltage	DC 12V±10%
Operating Temperature	-20°C~50°C, RH95% MAX
Storage Temperature	-30°C~60°C, RH95% MAX
Lens	3.6mm F = 2.0
Camera Angle	90°
Weight	25 g