

Highway Call Box KNZD-09A-SC5



The weatherproof phone will be designed to work on high-way, railway, metro, tunnel, etc. Housed in robust aluminium die case, it will offer protection against the outdoor environment, vandal resistance and rot resistance. The unit will meet all the latest European/UK standards for EMC and US FCC, telephony, waterproofing IP66, and lightning protection together with offering the level of performance and reliability demanded in such an environment.

Main Product Features

1. GSM telephone.
2. Metal body, solid and temperature bearable.
3. Handset free, 3W loudspeaker.
4. Heavy duty vandal resistant buttons.
5. With or without keypad optional.
6. Waterproof grade about IP66.
7. Body with grounding connection protection.
8. Support hotline call, stop if the other side hang up.
9. Built-in loud speaker, noise canceling microphone.
10. Lighting will flash when there is an incoming call.
11. Built-in rechargeable battery with solar powered panel.
12. The design is super thin and smart. Embed style and hanging style can be chosen.
13. Time out function optional.
14. Color: Yellow or OEM.
15. Temper-proof body
16. Special alarm message by SMS function if:
 - Push button not work
 - Low battery
 - Low GSM signal
 - Door opened
 - SMS recipient number
 - Hot line number

Main PCB

1. Well treated PCB used inside the phone.
2. Robust screw terminals used for the connection of ringer, handset, line in, hook switch.
3. All connectors be greased in production.

Technical Specification

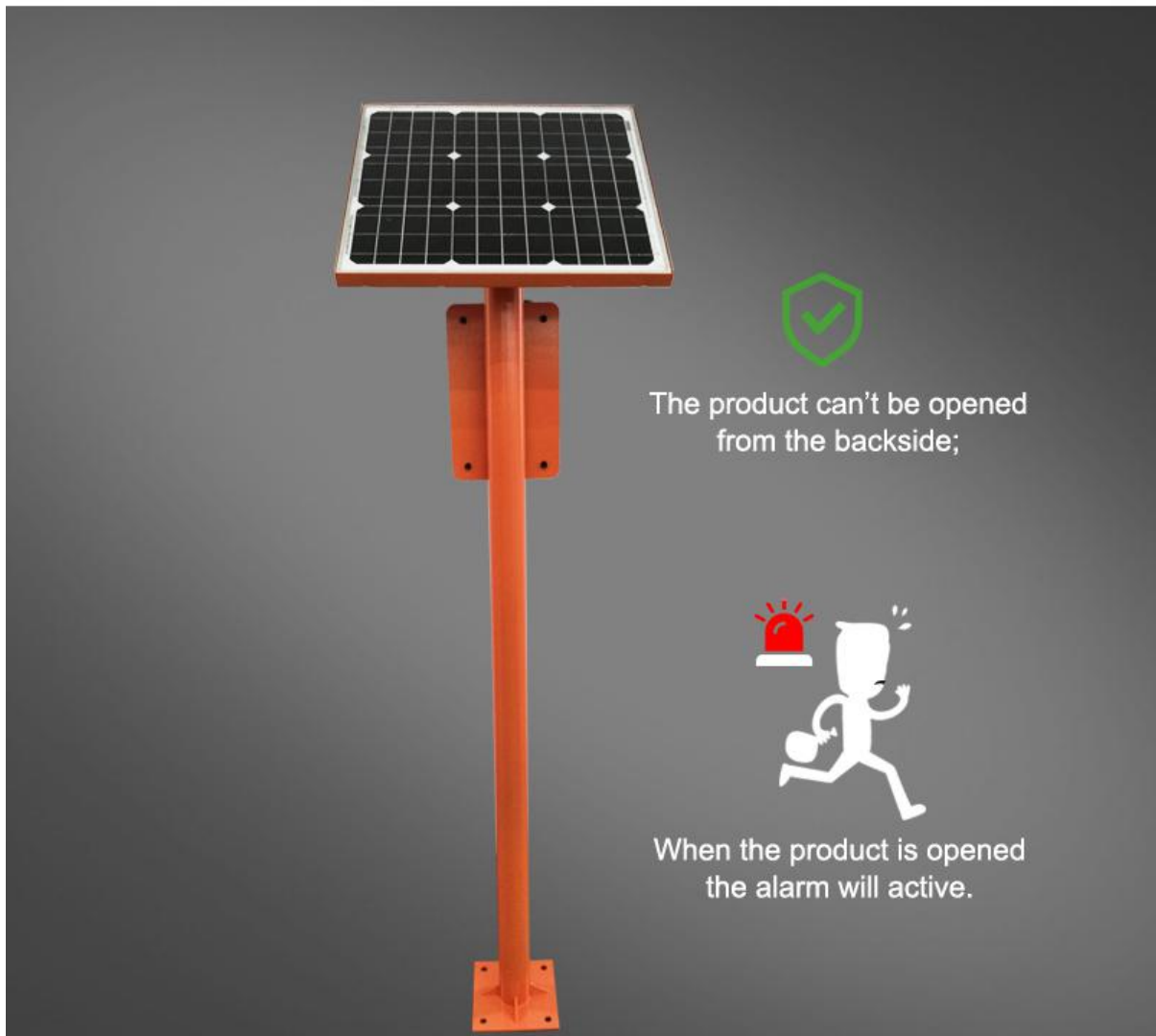
1. Ringing: Through internal Speaker/ringer
2. Time out: selectable 0-20 minutes
3. Temperature: 0°C ~+60°C
4. Relative Humidity: up to 90%.

Anti-tamper antenna

Prevent the destruction of the antenna by external force majeure.



Tamper-proof installation



GSM version KNZD-09A

Full Duplex Hands-free Speakerphone	SMS remote alarm
High power amplifier and speaker	Over the air firmware updates
Acoustic echo cancellation	Vandal and water resistant call button and locks
Background noise reduction	Sequential number calling (on failure to connect)
Quad Band GSM (850/900/1800/1900MHz)	Configuration using SMS commands
SMS remote program the hot line	Feature control using operator telephone touchpad (DTMF)



Vandal-proof

- Overall no exposed thread

High temperature design

- The whole machine is suitable for outdoor high temperature working environment

Long standby

- Inner 14000mAh Lithium batteries
Standby time up to 355 hours



Glowing night vision

Practical night glow sign



Flashing at night



Accessories Specification

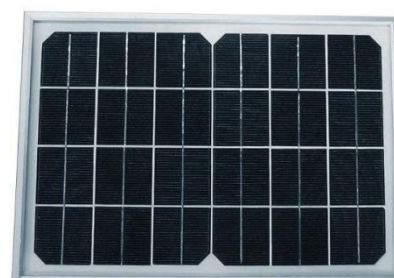
Rechargeable battery

Model:	Lithium batteries
Nominal capacity:	48Ah
Nominal voltage:	7.4V
Inside resistance	≤500mΩ
Charging ways:	Constant voltage
Maximum charge current	1C(4800ma)
Charging cap voltage:	8.4V
Charge temperature:	0~+45°C
Circle life:	≥500 times
Charged maintenance ability:	Residual capacity > 90%
packing:	Blue soft PVC



Solar panel

Product material:	Solar toughened glass
productive technology:	Glass laminated
Storage/using temperature	-30°C+60°C
Dimension:	355*250*23MM
specifications:	12V/10W
Open-circuit voltage:	14.6V
Working voltage:	12V
Short-circuit current:	0.99A
Working current:	0.83A



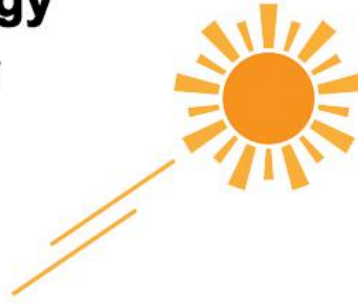
Solar control

Specification	DC12V/10A
Solar energy input voltage	<55V
Over voltage protection	14.6V
Over-discharge recovery voltage	12.5V
Under-voltage	12V
Over-discharge voltage	11V
Operating temperature	-35°C+65°C
Dimensions	82x58x20mm



Recycle energy

· Cycling solar energy



Low battery alarm

Selection of color

Color card number1 : B5775K



Color card number2 : RAL2010 Signalorange 17021



HONGKONG KOON TECHNOLOGY LTD

TEL:0086755 29790158/27448753 Fax:0086755 29790278
Email:marketing@koontech.com www.koontech.com